



**XR Plus** 4, 8 & 16 Channel

Standalone DVR

Quick Start Guide

## TURNING ON / OFF THE SYSTEM

### TURNING ON THE SYSTEM

Menu / User Name / Password / System Starts



Default Password is 1234

? Default recording schedule is  
'continuous recording'

POWER

### TURNING OFF THE SYSTEM



'8/16 channel DVR - Press Power button

4 channel DVR - Select Setup and type in password  
and click Shutdown



Type in User Name + Password in the Menu Box  
click Enter

POWER

# FUNCTION BUTTONS

Front Panel

Remote Control

Power



System Turning On and Off

Number



To use full screen or type in Password

Arrow



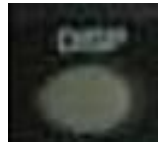
To move to other menu using direction key

Enter



Apply the changed setup or to setup each menu

Display



To use 1, 4, 9 screen division on main monitor

Sequence



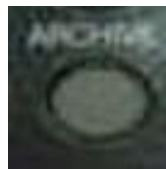
To use selected screen division on main monitor, user can make their own sequence or normal sequence mode

Setup



For setup

Archive



To backup recorded images

Front Panel Remote Control



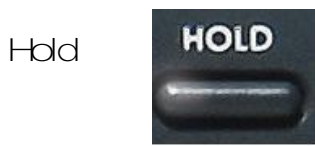
To search recorded images



To control playback speed of recorded images



To cancel setup of each menu or go back to the prior menu mode



To fix playback speed without holding jog shuttle



To do recording immediately while monitoring live screen



To lock all the front panel buttons



PTZ control for PTZ cameras



To use Digital Zoom of desired live screen

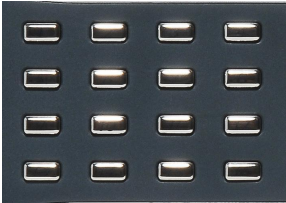


To setup Remote Control ID

## MONITORING LIVE IMAGES

Select channel

Press button to monitor one channel on full screen



Screen division



Choose any screen division as below.

- 1, 4, 9, 16 screen division
- Default screen is for all channel

# RECORDING SETUP

## Recording setup



Type in password '1234'



When Select Recording

? ¼



? 'recording mode'



## Resolution setup

'continuous/motion recording mode'



? 'resolution'



? 'time bar?'



? 'select start time?'



? 'select end time?'







? 'resolution, fps, quality/audio setup per each channel?'

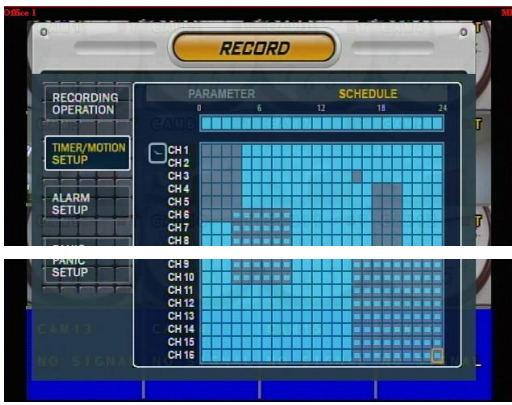


# SCHEDULE MODE SETUP

Continuous/Motion recording ? #  ? ¿Schedule? F  ? ¿Time Bar? -

 ? ¿select start time  ? ¿select end time? 9  ? ¿

 ? ¿no recording for each channel, continuous recording, motion recording 



# SEARCH RECORDED IMAGES

Live screen ?



? .Password '1234' ? ...



? ásearch date select



? ásearch time select



1. Use ? á and select date, then enter (Light blue shows that recorded image)
2. Time Selection: Chose date, then recorded image will be showed in time order. Use ? á , and select time, then press enter. (1 cell means 15 minutes)
3. Playback : Recorded date and time will be show on the center of bottom part And green light for "playing" on right side of bottom.
4. Same button in live mode and playback mode for searching



Playback x1



Reverse Playback x1



Pause





Fast Forward Playback (x2 ~ x64)



Fast Reverse Playback (x2 ~ x64)

Same for playback by event list

# BACKUP RECORDED IMAGES

Live screen mode  ? •password ? áselect start time ? •  
 '1234 ? ù 

 ? áselect end time ?  ? áStart



## 1. CD- RW and USB Back Up

? áDevice: Indicate CD- RW Model and USB MEMORY Model Automatically.

If you use the CD- RW and USB memory (or USB HDD) together,  
 it can choose the CD- RW and USB by Button

? "From: Select Start Backup Time.

? 'To: Select End Backup Time.

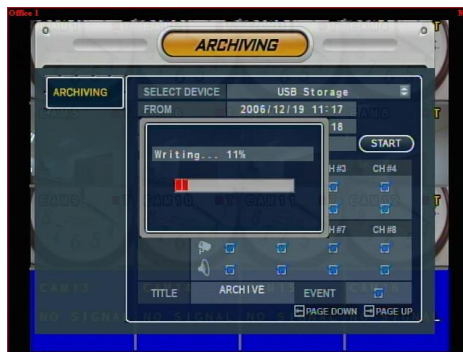
? ZChannel & Video/Audio Selection: Select Channel, Video, & Audio for Backup.

? áTitle: Change the Title of Backup by virtual keyboard.



? #Event: Select Attach Event Text File in Backup.

? ,Start: Start Backup.



# NETWORK SETUP



1. Check what type of network is used for the installation site

2. DHCP user

1) Connect the Network cable to the DVR back panel and start the system.

2) Tick DHCP in Menu – System – Network? DHCP (default is ticked)

3) Click Apply and click Cancel to see message box.

Click Yes to restart the system.

4) After system restart, check IP in Menu – System – Network

5) If Router is used, Client Port and Web Ports should be forwarded.

3. Static IP user

1) Connect the Network cable to the DVR back panel and start the system.

2) Untick DHCP in Menu – System – Network

3) IP, Gateway, Subnet Mask and DNS should be filled as provided the internet service provider

4) Click Apply and Cancel to view message box. Click OK and restart the system.

5) After system restart, check IP in Menu – System – Network

4. Client Port is for using Remote Agent operation.

If Client port has been forwarded in DVR, port in Remote Agent setup should be followed.

5. Web Port is for using Internet Explore. If web port has been forwarded in DVR, port in Web Browser should be designated.

## TROUBLE SHOOT

| PROBLEM                                      | CHECK   |
|--|---|
| DVR does not boot up                         | <ol style="list-style-type: none"> <li>1. Check the power code is plugged.</li> <li>2. Check the power cable is the right one for the system.</li> </ol>  |
| LEDs (power, rec, network, alarm) are not on | <ol style="list-style-type: none"> <li>1. Check if the system is started.</li> <li>2. Check the recording setup.</li> <li>3. Check the network cable and network setup.</li> <li>4. Check the alarm setup.</li> </ol> |
| There is no image on live screen             | <ol style="list-style-type: none"> <li>1. Check camera and DVR connection.</li> <li>2. Check the camera setup and camera operation.</li> </ol>  |
| Remote Control is not working.               | <ol style="list-style-type: none"> <li>1. Check the batteries are put in rightly</li> <li>2. Change the batteires</li> </ol>  |
| Audio output is not working right            | <ol style="list-style-type: none"> <li>1. Check the Audio cable to the input / output</li> <li>2. Check the Audio setup</li> </ol>  |
| Forgot password                              | Contact the distributor or dealer   |